

Hemoccult[®]_{BRAND}

Fecal Occult Blood Tests

Interpreting the Hemoccult and Hemoccult SENS[®]A tests.

Hemoccult[®]

Negative Smears^{*}

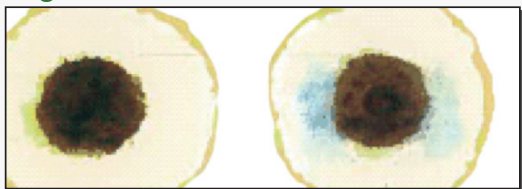


Sample Report: Negative

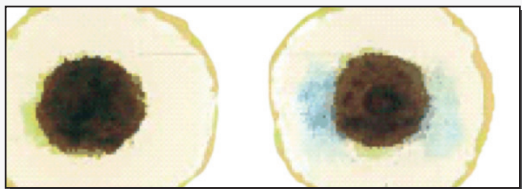
No detectable blue on or at the edge of the smears indicates the test is negative for occult blood.

(See Hemoccult Product Instructions –
LIMITATIONS OF PROCEDURE.)

Negative and Positive Smears^{*}



Positive Smears^{*}



Sample Report: Positive

Any trace of blue on or at the edge of one or more of the smears indicates the test is positive for occult blood.

Hemoccult SENS[®]A

Negative Smears^{*}



Sample Report: Negative

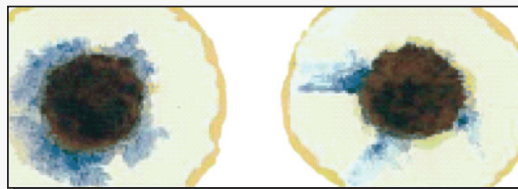
No detectable blue on or at the edge of the smears indicates the test is negative for occult blood.

(See Hemoccult SENS[®]A Product Instructions –
LIMITATIONS OF PROCEDURE.)

Negative and Positive Smears^{*}



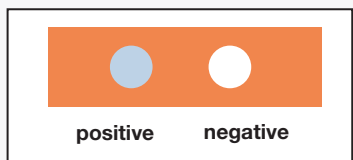
Positive Smears^{*}



Sample Report: Positive

Any trace of blue on or at the edge of one or more of the smears indicates the test is positive for occult blood.

ON-SLIDE PERFORMANCE MONITORS FEATURE



Positive

A blue color will appear within 10 seconds after application of Developer and remain stable for at least 60 seconds if test system is functional.

Negative

No blue should appear after application of Developer if test system is functional.

Any blue originating from the Performance Monitors areas should be ignored when reading the specimen test results.

Neither the intensity nor the shade of blue from the positive Performance Monitors area, as illustrated, should be used as a reference for the appearance of positive test results.

*Above illustrations are an artist's renditions. Each illustration shows two smears from a single fecal sample as displayed on a single Hemoccult or Hemoccult SENS[®]A test card.

CLIA

- CPT Code* #82270, #82272QW
- Waived



Ordering Information

Hemoccult Products

Hemoccult Single Slides Kit 60151

- 100 Slides
- 100 Applicator Sticks
- 2 X 15 mL Bottles of Hemoccult Developer

Hemoccult Single Slides Without Developer Kit A96635+

- 100 Hemoccult Single Slides
- 100 Applicator Sticks

+To be used in conjunction with product # 62115.

Hemoccult Single Slides Kit 60152

- 1000 Single Slides
- 1000 Applicator Sticks
- 20 X 15 mL Bottles of Hemoccult Developer

Hemoccult II Triple Slides Kit 61200

- 34 Triple Slides
- 102 Applicator Sticks
- 2 X 15 mL Bottles of Hemoccult Developer

Hemoccult II Dispensapak Patient Screening Kit 61100

- 100 Patient Screening Kits (Triple Slide and Applicator Sticks only)
- 3 X 15 mL Bottles of Hemoccult Developer per Case

Hemoccult II Dispensapak Plus Patient Screening Kit 61130

- 3 Applicator Sticks
- 1 Triple Slide
- 40 Patient Kits
- 2 X 15 mL Bottles of Hemoccult Developer

CLIA

- CPT Code* #82270, #82272QW
- Waived



Ordering Information

Hemoccult SENSE Products

Hemoccult SENSE Single Slides Kit 64151

- 100 Single Slides
- 100 Applicator Sticks
- 2 X 15 mL Bottles of Hemoccult SENSE Developer

Hemoccult SENSE Single Slides Without Developer Kit A96636+

- 100 Single Slides
- 100 Applicator Sticks

+To be used in conjunction with product # 64115. Box of 20 15mL Bottles of Hemoccult SENSE Developer

Hemoccult SENSE Single Slides Kit 64152

- 1000 Single Slides
- 1000 Applicator Sticks
- 20 X 15 mL bottles of Hemoccult SENSE Developer

Patient Screening Kit Hemoccult II SENSE Dispensapak Plus 64130

- 40 Patient Screening Kits
- 2 X 15 mL Bottles of Hemoccult SENSE Developer

Hemoccult SENSE Developer 64115

- Box of 20 X 15 mL Bottles of Hemoccult SENSE Developer

For immunochemical testing, ask about Hemoccult ICT.

*Exemplar CPT provided. Refer to regional CMS fee schedule for relevant/current CPT codes.

Beckman Coulter is the leader in fecal occult blood testing and offers the very best in rapid tests designed to simplify the diagnostic process. Early detection is the single most important advantage a patient can have to survive life-threatening diseases. Beckman Coulter provides the tools and tests physicians need to aid in the diagnosis and management of a variety of disease states.

Beckman Coulter also provides a variety of Immunoassay, Chemistry, Hematology and Centrifugation instruments to aid in the diagnosis and management of a full spectrum of medical conditions. Each system's compact design and cost-effective performance makes it a perfect complement to a physician's office laboratory.

To order product, contact your medical supply distributor. For technical assistance regarding rapid test kits, call Technical Marketing at 800-877-6242 or email askpcd@beckman.com.

Lab Testing Made Easy

Beckman Coulter Rapid Diagnostics Product Offering

Hemoccult Hemoccult SENSE Hemoccult II SENSE elite Hemoccult ICT

CLIA-waived rapid tests for the detection of hidden blood in feces

Gastrocult

CLIA-waived rapid test for detecting hidden blood in gastric fluid and determining gastric pH

ICON Hp

CLIA-waived (whole blood) and moderately complex (serum) rapid test for the detection of antibodies to *H. pylori*

ICON 20 hCG ICON 25 hCG

CLIA-waived (urine) and moderately complex (serum) rapid tests for the detection of hCG

ICON Mono

CLIA-waived (whole blood) and moderately complex (serum) antibody test for infectious mononucleosis

ICON DS Strep A ICON SC Strep A

CLIA-waived dipstick and cassette rapid format tests for the detection of Strep A, using throat swab sample



Beckman Coulter, the stylized logo, Hemoccult, Hemoccult II, SENSE, Gastrocult, ICON and Performance Monitors are trademarks of Beckman Coulter, Inc. and are registered with the USPTO. Dispensapak is a trademark of Beckman Coulter, Inc.

For Beckman Coulter's worldwide office locations and phone numbers, please visit www.beckmancoulter.com/contact

FL-16681B B2012-13688

www.beckmancoulter.com

© 2013 Beckman Coulter, Inc.