



# Sofia<sup>®</sup> Influenza A+B FIA

## The ART of Flu Testing



Accurate, objective and automated results in **as few as 3 minutes**



**Secure, remote instrument management** through the Virena ecosystem



**Excellent performance** compared to molecular and viral culture methods



**Integrated data management** automatically stores test and user history



**Flexible, dual mode testing and simple, CLIA-waived procedures** for a variety of laboratory environments



User and patient ID captured with **onboard barcode scanner**

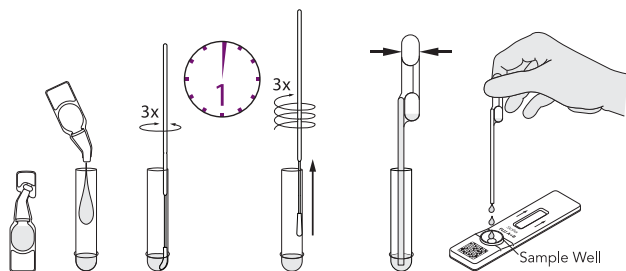
**Sofia 2** with **Advance Result Technology**  
*Delivering accurate, objective and automated results in as few as three minutes!*

**ART** ≥  
*Advance Result Technology*

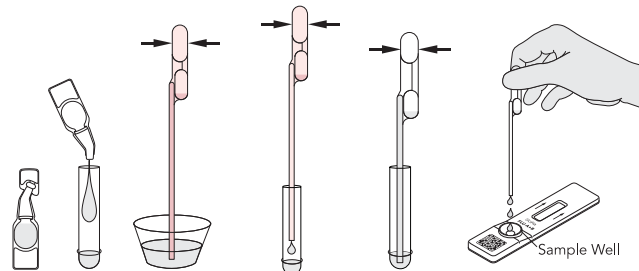


## Sofia Influenza A+B FIA – Procedures

### Nasal/Nasopharyngeal Swab Procedure

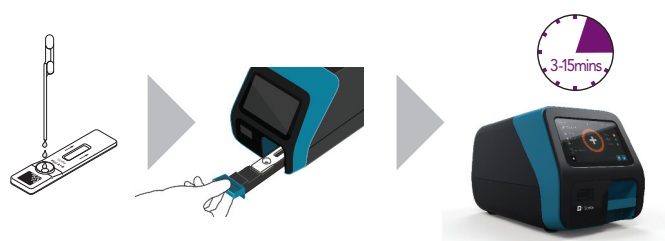


### OR Nasopharyngeal Aspirate/Wash Procedure

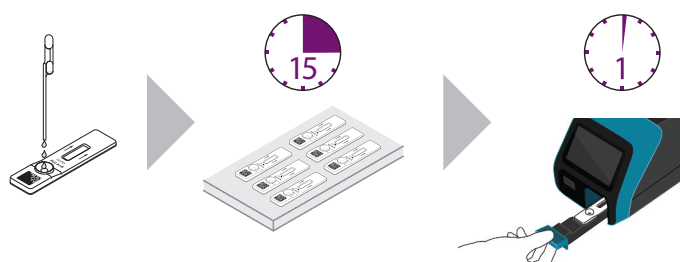


## Sofia 2 Development Modes

### WALK AWAY Mode – Walk away and multitask



### READ NOW Mode – Batch multiple samples per hour



### Sofia Influenza A+B FIA

- Meets reclassification requirements for rapid influenza antigen tests
- Includes Nasal swabs, NP swabs and NP aspirate/wash samples types
- Single specimen may be used for both Sofia RSV and Sofia Influenza
- Compatible with viral transport media
- Room temperature storage
- 21-month shelf life from date of manufacture

### Sofia Influenza A+B FIA Results vs. Culture\*

Samples		CLIA Waiver Studies	
		Sens	Spec
Influenza A	NS/NPS	93%	95%
	NPA/NPW	99%	96%
Influenza B	NS/NPW	90%	96%
	NPA/NPW	88%	96%

\*Refer to the Package Insert for additional performance claims.