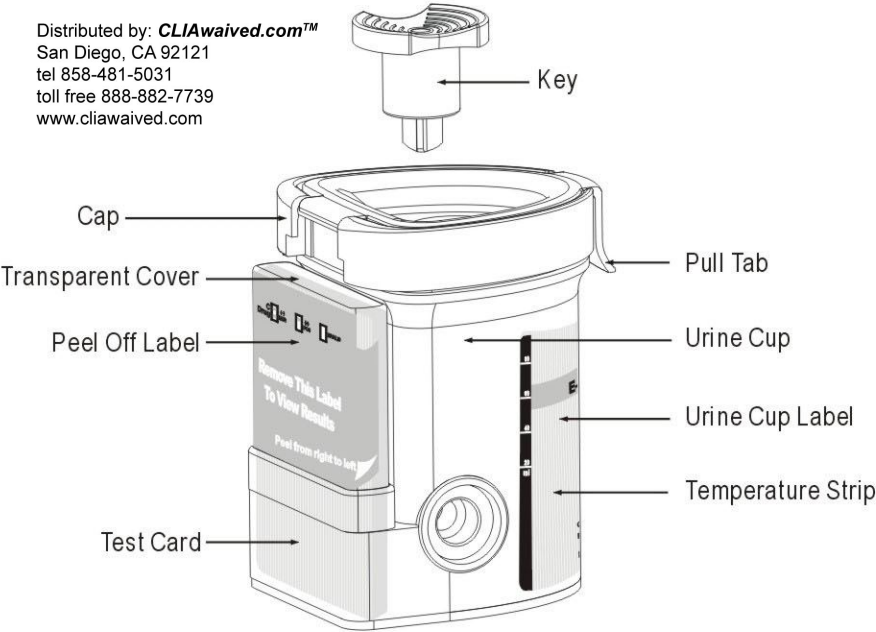


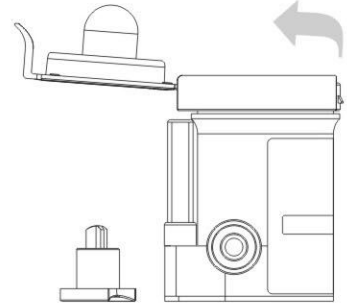
INTEGRATED E-Z SPLIT KEY® CUP II Procedure Card

Available with Specimen Validity Tests (S.V.T.)

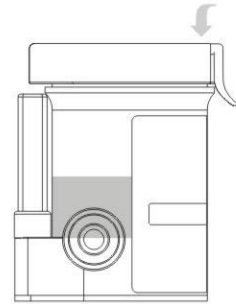
Distributed by: **CLIAwaived.com™**
 San Diego, CA 92121
 tel 858-481-5031
 toll free 888-882-7739
 www.cliawaived.com



1 Remove the key by twisting it from the center of the cup cap. Open cap with the Pull Tab. (Key is held by technician.)



2 Donor provides specimen and secures cap. Note: Secure cap by pressing down on the Pull Tab until an audible click is heard.



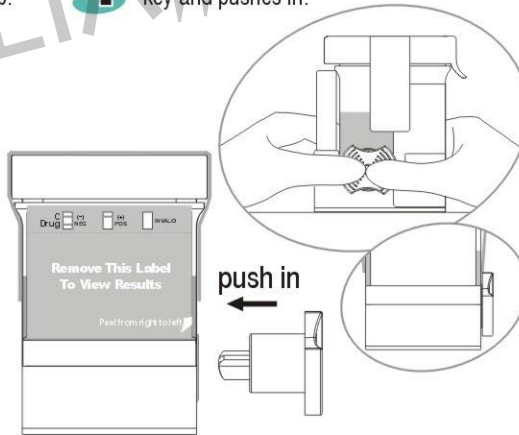
3 Check cap for tight seal. Technician dates and initials the security seal and places security seal over cap.



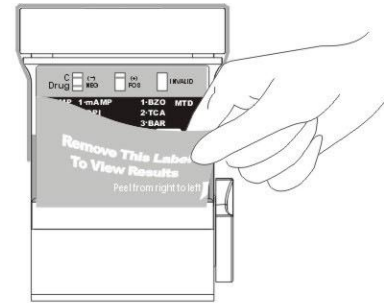
Place security seal over cup



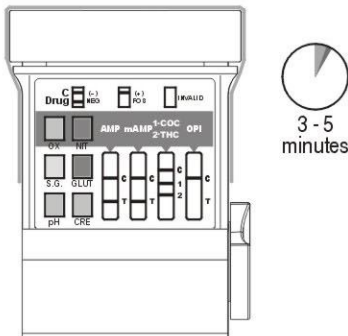
4 On a flat surface, technician inserts key and pushes in.



5 Peel off the label to view results.

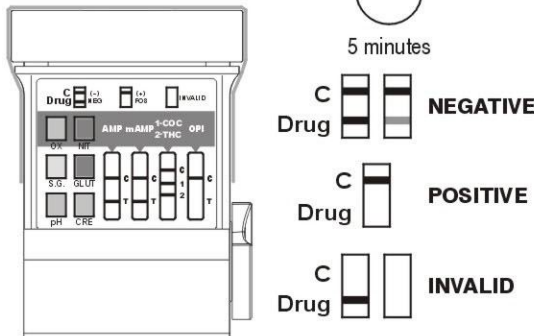


6 If the test cup includes S.V.T., read adulteration test results between 3 - 5 minutes.



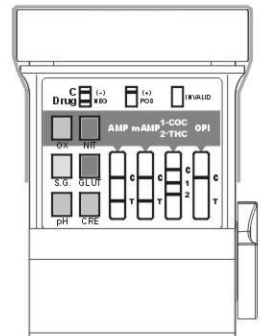
Adulteration Strips
 See color chart and package insert for interpretation.

7 Read drug test results at 5 minutes.



Example: Test shows positive for OPI.

8 A photocopy of the drug test results can be made by placing the entire cup with the card face down on the copier.



All positive results are presumptive and should be confirmed by an alternative method. (e.g. GC/MS)