

QUICKVUE[®]

iFOB TEST
Immunochemical Fecal Occult Blood

One visit. One test. One time.[®]

Colorectal cancer is the second leading cause of cancer-related deaths in the United States for both women and men.¹ This disease surpasses both breast and prostate cancer in mortality, second only to lung cancer in the number of cancer deaths.¹ Despite the fact that it is highly preventable,¹ it is estimated that 148,610 new cases of colorectal cancer will be diagnosed and 55,170 people will die from the disease in 2006.²

Quidel's CLIA-waived QuickVue iFOB test is an easy to perform diagnostic tool used to detect the presence of blood in stool specimens. Blood in the stool is an indication of a number of gastrointestinal disorders, including colorectal cancer. Simply add six (6) drops of the buffered specimen solution into the cassette sample well and read the results in 5 to 10 minutes.

The QuickVue iFOB test requires only one specimen, and because it is specific to human hemoglobin, patients are not required to adhere to strict dietary or medication restrictions. The result is a more patient friendly test that is easier to complete.³ Additionally, immunochemical FOB tests are more analytically sensitive than traditional Guaiac based methods.⁴

The QuickVue iFOB test has the potential to increase patient compliance and offers superior analytical performance (as compared to Guaiac tests)³ to positively impact both patient care and satisfaction.



¹Cancer Research and Prevention Foundation 2005.

²American Cancer Society, www.cancer.org, 2/9/2006.

³OncoLog, February 2004, Volume 49, No. 2.

⁴Centers for Medicare and Medicaid Services.

Rapid Diagnosis

- Results in 5 to 10 minutes
- Positive results may become visible sooner

Easy to Use

- Efficient collection
- Secure transport
- Convenient and sanitary dispenser

Excellent Performance

- Analytical sensitivity: 50 ng hHb/mL buffer or 50 µg hHb/g feces
- Specificity: Specific to human hemoglobin
- Physician office laboratory agreement is 98% when using quality control specimens

Convenient

- Available in 20 test kit size and 50 test tray pack
- Additional Specimen Collection and Return Kits available separately in convenient 10 kit size
- External kit controls available separately
- Room temperature storage
- 24-month shelf life from date of manufacture

CLIAwaived[™].com

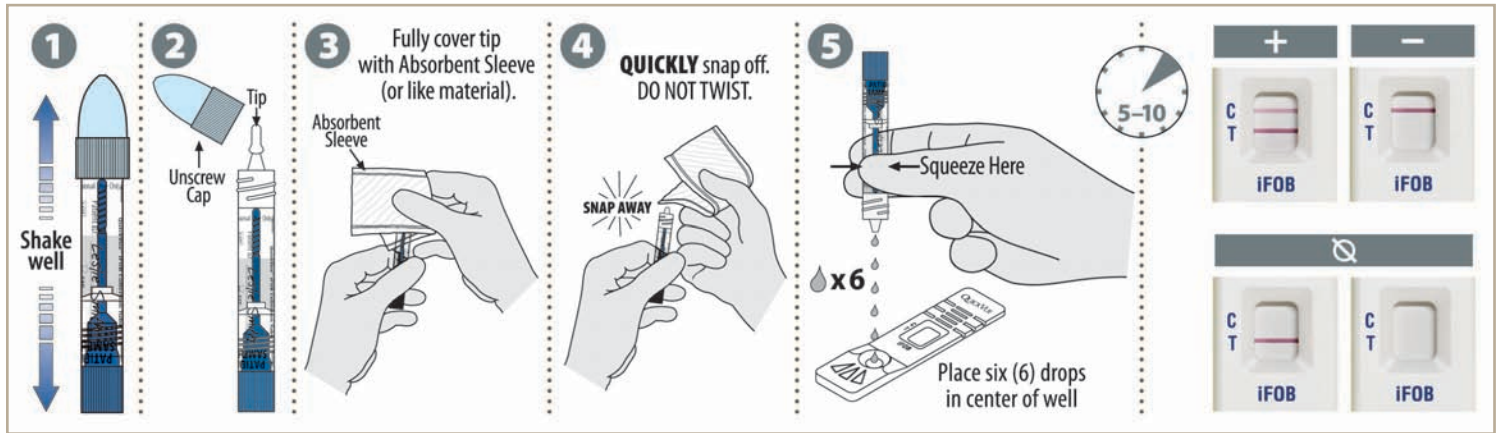
For more information please contact CLIAwaived Inc. at
11578 Sorrento Valley Road ■ San Diego, CA 92121
Tel: (858) 481-5031 ■ Toll Free: (888) 882-7739
E-mail: info@cliawaived.com
Visit us on the web at: www.cliawaived.com
Distributed by: CLIAwaived, Inc.

QUIDEL[®]
CORPORATION

For more information on QuickVue iFOB test kits, visit our website or call your Quidel Account Manager at 1.800.874.1517 (U.S. only), or 858.552.1100 (outside U.S.).

Quidel Corporation • Worldwide Headquarters • 10165 McKellar Court • San Diego, CA 92121 USA • www.quidel.com

Test procedure:



20 Test Kit Intended for POL

- Designed as a take home test, where the patient returns sample by mail
- Includes patient take-home specimen collection and return components

50 Test Tray Pack Intended for Acute Care

- Designed for bedside testing and large volume accounts
- Collection tube and test trays are printed with procedures, which allow for distribution throughout facility
- Large test volume and compact packaging provide efficient storage



To order: Call your Quidel Account Manager at 1.800.874.1517



QuickVue iFOB – 20 Test Kit: Catalog #20194

QuickVue iFOB Specimen Collection and Return Kit – 10 Test Kit: Catalog #20196

QuickVue iFOB – 50 Test Tray Pack: Catalog #20201

iFOB Control Set – Catalog #20197



For more information on QuickVue® iFOB test kits, visit our website or call your Quidel Account Manager at 1.800.874.1517 (U.S. only), or 858.552.1100 (outside U.S.).

Quidel Corporation • Worldwide Headquarters • 10165 McKellar Court • San Diego, CA 92121 USA • www.quidel.com

Distributor Information: