



SAFE life™

SAFElife Oral Fluid Tests

Rapid Point-of-Care Toxicology Testing

SAFElife's T-Square Oral Fluid Drug Test is a simple and convenient method for drug screening. Full observation during collection allows testing to be performed anytime and anywhere, which greatly reduces specimen tampering concerns. Because it takes time for drugs to metabolize and pass through the body, oral fluid is also recognized as the optimal method for impairment detection.

T-Square® Oral Fluid Drug Test

Key Benefits:

- Convenient rapid screening
- Test up to 12 drugs & alcohol
- E&I exempt and Forensic Use Only testing panels
- Rapid results
- Easily witnessed collection
- Tamper resistant
- Detects recent drug use
- THC detection aligns with 10-hour window of impairment



Expanded Application of Oral Fluid Drug Testing to Non-Federal Workplace and Insurance

The Food and Drug Administration (FDA or Agency) is announcing a list of class II devices that the Agency has determined based on established factors to no longer require premarket notification to provide reasonable assurance of safety and effectiveness, subject to certain limitations. FDA is publishing this notice of that determination in accordance with procedures established by the 21st Century Cures Act.

*The Employment & Insurance (E&I) Exemption Notice by the Food and Drug Administration on 07/11/2017.



SAFE life™

E&I Exempt Panels

Drug	Cutoff
Amphetamine (AMP)	50 ng/mL
Barbiturates (BAR)	20 ng/mL
Cocaine (COC)	20 ng/mL
Marijuana (THC)	40 ng/mL
Methadone (MTD)	30 ng/mL

Drug	Cutoff
Methamphetamine (MET)	50 ng/mL
Methylenedioxy-methamphetamine (MDMA)	50 ng/mL
Opiate (OPI)	40 ng/mL
Oxycodone (OXY)	20 ng/mL
Phencyclidine (PCP)	10 ng/mL

Forensic Use Only Panels

	Alcohol (ACL)	0.02 g/dL
	Amphetamine (AMP)	50 ng/mL
	Barbiturates (BAR)	60 ng/mL
	Benzodiazepines (BZO)	30 ng/mL
	Buprenorphine (BUP)	5 ng/mL
	Cannabinoids (THC)	25 ng/mL
	Cocaine (COC)	20 ng/mL
	2-ethylidene-1,5-dimethyl-3-3-diphenylpyrrolidine (EDDP)	20 ng/mL
	Fentanyl (FTY)	30 ng/mL

	Ketamine (KET)	100 ng/mL
	Methadone (MTD)	30 ng/mL
	Methamphetamine (MET/mAMP)	50 ng/mL
	Methylenedioxymethamphetamine (MDMA)	100 ng/mL
	Opiate (OPI)	40 ng/mL
	Oxycodone (OXY)	20 ng/mL
	Phencyclidine (PCP)	10 ng/mL
	Synthetic Cannabisoids (K2)	5 ng/mL



SAFE life™

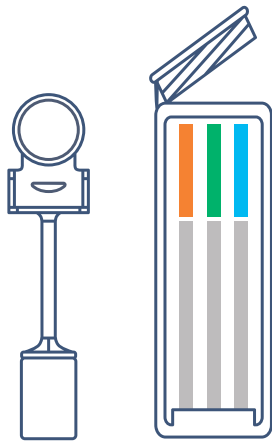
Procedure

Allow the kit and specimen to come to room temperature prior to testing.

Avoid placing anything in the mouth 10 minutes prior to testing.

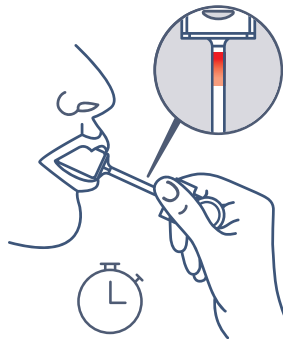
1

Remove the test cube and the sponge collector from the foil pouch by tearing at the notch. Place the test cube upright on a level surface.



2

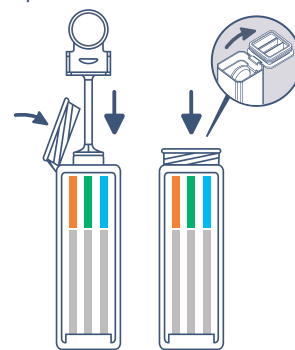
Put the sponge end of the collector on your tongue or near cheek to collect oral fluid for about 3 minutes until color on saturation indicator strip appears RED in the indicator window. If color on saturation indicator has not turned red at 7 minutes, repeat the collection using one additional sponge collector provided, beginning with Step 1.



3

Open the test cube and place the fully saturated sponge collector inside the test cube. Press the sponge collector down firmly until it reaches the bottom of the test cube, then close the cube lid tightly while compressing the collector. Keep test cube upright on a flat surface and follow Step 4.

NOTE: Make sure the sponge collector is inserted vertically and the handle of collector is put into the clamp.



4

Interpreting Alcohol Test Results:

Read results at 2 minutes. Results after 2 minutes may not be accurate.

NEGATIVE: No color changes on reaction pad.

POSITIVE: Compare the color of reaction pad with provided color charge to estimate the approximate blood alcohol level.

Interpreting Drug Test Results:

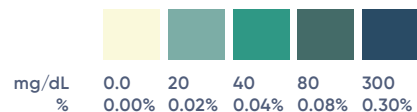
Read results at 5 minutes. Results after 5 minutes may not be accurate.

NEGATIVE: Two colored lines will appear on the strip. The intensity of the line does not matter.

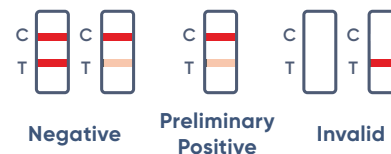
POSITIVE: One colored line will appear in the C section of the test strip.

Note: If no colored lines appear, the results are invalid, and the test should be repeated.

Blood Alcohol Concentration



Drug Test Results





SAFE life™

Oral Drug Testing Products

⌘ Kit Size / Case Size
25 / 4

Item Code	Description	Complexity
QODOA-156NTEUO-I	5-Panel T-Square no THC with indicator; AMP, COC, MET, OPI, PCP	E&I Exempt
QODOA-256EUO-I	5-Panel T-Square with indicator; AMP, COC, MET, OPI, THC	E&I Exempt
QODOA-166EUO-I	6-Panel T-Square with indicator; AMP, COC, MET, OPI, PCP, THC	E&I Exempt
QODOA-366NTEUO-I	6-Panel T-Square no THC with Indicator; AMP, COC, MET, OPI, OXY, PCP	E&I Exempt
QODOA-666EUO-I	6-Panel T-Square with indicator; AMP, COC, MET, OPI, OXY, THC	E&I Exempt
QODOA-376EUO-I	7-Panel T-Square with Indicator; AMP, COC, MET, OPI, OXY, PCP, THC	E&I Exempt
QODOA-496NTEUO-I	9-Panel T-Square no THC with Indicator; AMP, BAR, COC, MDMA, MET, MTD, OPI, OXY, PCP	E&I Exempt
QODOA-10106EUO-I	10-Panel T-Square with indicator; AMP, BAR, COC, MDMA, MET, MTD, OPI, OXY, PCP, THC	E&I Exempt
QODOA-266-I	6-Panel T-Square with indicator; AMP, BZO, COC, MET, OPI, THC	Forensic Use Only
QODOA-376-A*	7-Panel T-Square; AMP, COC, MET, OPI, PCP, THC + ALC	Forensic Use Only
QODOA-186-I	8-Panel T-Square with Indicator; AMP, BUP, BZO, COC, MET, OPI, OXY, THC	Forensic Use Only
QODOA-2106	10-Panel T-Square; AMP, BUP, BZO, COC, MET, MTD, OPI, OXY, PCP, THC	Forensic Use Only
QODOA-2106-I	10-Panel T-Square with indicator; AMP, BUP, BZO, COC, MET, MTD, OPI, OXY, PCP, THC	Forensic Use Only
QODOA-5106	10-Panel T-Square; AMP, BAR, BUP, BZO, COC, MET, OPI, OXY, PCP, THC	Forensic Use Only
QODOA-1116-A*	11-Panel T-Square no THC ; AMP, BAR, BUP, BZO, COC, MET, MTD, OPI, OXY, PCP + ALC	Forensic Use Only
QODOA-2116-A*	11-Panel T-Square; AMP, BAR, BUP, BZO, COC, MET, OPI, OXY, PCP, THC+ALC	Forensic Use Only
QODOA-4116-A*	11-Panel T-Square; AMP, BAR, BZO, COC, MET, MTD, OPI, OXY, PCP, THC + ALC	Forensic Use Only
QODOA-5116-I	11-Panel T-Square with Indicator; AMP, BAR, BUP, BZO, COC, MET, MDMA, MTD, OXY, OPI, THC	Forensic Use Only
QODOA-3126-A*	12-Panel T-Square; AMP, BAR, BUP, BZO, COC, MET, MTD, OPI, OXY, PCP, THC+ALC	Forensic Use Only
QODOA-6126	12-Panel T-Square; AMP, BAR, BUP, BZO, COC, MDMA, MET, MTD, OPI, OXY, PCP, THC	Forensic Use Only

⌘ Customizable drug panels & Alcohol test are available.

A* Alcohol testing is included.