

# How to Use HandyRay-Pro

## ① Blood drawing finger & area



When selecting finger, gather blood from the side of the fingers in the order shown in above image.

(The two sides of the fingers accompany less pain, and gathering blood from thumb and forefinger which have relatively thicker skin is not advised.)

## ② Turn on device



Press power button for 3 sec. to turn on device.

(While not in use, the device turns off automatically after 2 min.)

## ③ Select laser level



Select appropriate laser level in accordance with user skin thickness.

**Advised - Level 1 : Toddler & children, Level 1~2 : Women, Level 2~3 : Men**

(When user's hands are colder than average and when large amount of blood needs to be gathered, it's advised to use 1~2 level higher than what's advised.)

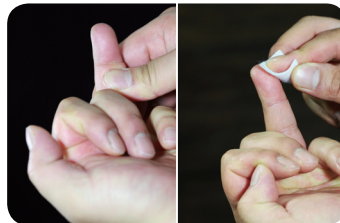
## ④ Using disposable cap



Attach disposable cap on laser aperture.

(Laser will not irradiate without disposable cap or when reusing cap as its coating comes off.)

## ⑤ Massage & sterilization



As if massaging fingers, collect blood by pushing up blood from the bottom for 2~3 times, and sterilize the area with alcohol cotton swab.

## ⑥ Laser charging



① Press charge button and grasp black safety sensor with palm.

② On LED display, numbers will spin and pause with alarm sound once charging is complete.

## ⑦ Laser irradiation & blood gathering



① Place aperture on finger area and press slightly to operate air-vent with alarm sound.

② Press irradiation button, remain still for 1~2 sec. and remove device to check gathered blood.

③ To gather more blood, massage finger from bottom to top 2~3 times.

## ⑧ Perforation & blood amount



① Check for perforation when there is no blood after using device.

② Once there is perforation, massage finger from bottom to top 2~3 times to check gathered blood.

③ If there is no perforation, repeat laser irradiation process.

# HandyRay-Pro Cautions

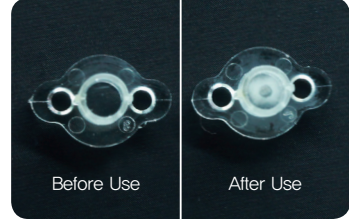
## [ Before Use ]



Device must be used with disposable cap.

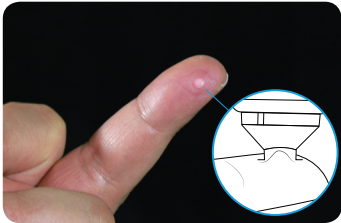


To prevent safety accident, laser is irradiated only after charging and when safety sensor and laser aperture sensor makes contact with human skin.



Do not reuse disposable cap, as laser will not be strong enough to collect blood due to damaged coating.

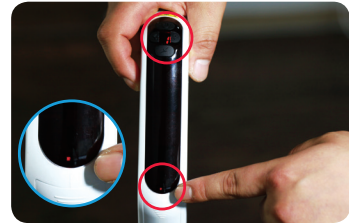
## [ During Use ]



Prior to gathering blood, place laser aperture with skin tightly so that the skin bubble is formed within the aperture.



During and after irradiating laser, remain still for 1~2 seconds.



When battery is low, 1 battery LED lamp will light up, with blinking numbers on display and alarm sound. Place device in charging cradle or connect with adapter for charging.

## [ After Use ]



Wipe laser irradiation lens using cotton swab with alcohol regularly.

(Device will not operate properly when lens is polluted.)



Press reset button when laser irradiation does not operate properly.

