

Xylazine (XYL) Rapid Test



Distributed by CLIAwaived, Inc.

(Note: This Test is not FDA Cleared and For Research Use Only)

Product Advantages

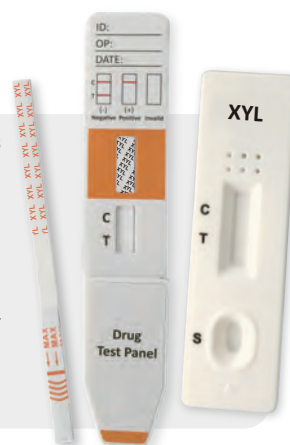
- ✓ Easy Visual Interpretation
- ✓ High Accuracy
(Sensitivity >99.9% , Specificity >99.9% , Accuracy >99.9%)

- ✓ Convenient Procedure
- ✓ Fast Results in 5 Minutes

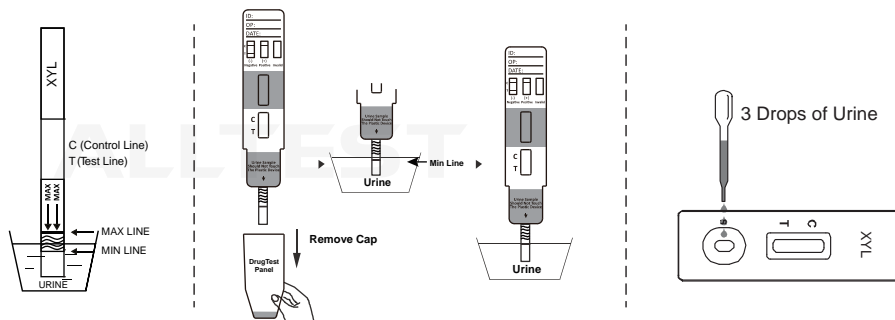
Xylazine is a veterinary tranquilizer, which is not approved for human use in the United States, but is commonly used for sedating large animals.

Since the mid-2010 s, xylazine has been noticed by people who inject drugs (PWID) and public health practitioners as an increasingly commonplace additive in the street opioid supply of Philadelphia. Further, recent reports from Connecticut implicated xylazine in a rising fraction of overdose deaths in 2019–2020.

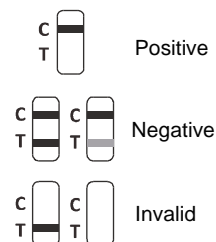
Xylazine has also been reported to be misused as a horse doping agent, a drug of abuse, a drug for attempted sexual assault, and as source of accidental or intended poisonings. From human reported cases, central nervous system depression, respiratory depression, bradycardia, hypotension, and hyperglycemia were observed.



Convenient Procedure



Result



Ordering Information

Cat. No.	Product	Specimen	Cut-off	Sample Volume	Pack
DXYL-114	Xylazine (XYL) Rapid Test Rapid Test Panel	Urine		/	40 T
DXYL-101	Xylazine (XYL) Rapid Test Rapid Test Dipstick	Urine	1000 ng/mL	/	50 T
DXYL-102	Xylazine (XYL) Rapid Test Rapid Test Cassette	Urine		Urine: 120 µL	40 T