

CLIAwaived,™ Inc. H. PYLORI TEST KIT

H. pylori has been associated with a variety of gastrointestinal diseases around the world. This rapid qualitative immunoassay detects antibodies specific to Helicobacter pylori in human whole blood.

- Results in 4 minutes
- One-step test with built-in procedural control
- Room temperature storage



CLIA-05-9476 (25 tests)

NOTE: For use by health care professionals only. This device provides a presumptive result and should be used in conjunction with patient's symptoms and physician's other diagnostic results. The CLIAwaived,™ Inc. H. pylori Test Kit is NOT CLIA-waived when using serum samples.

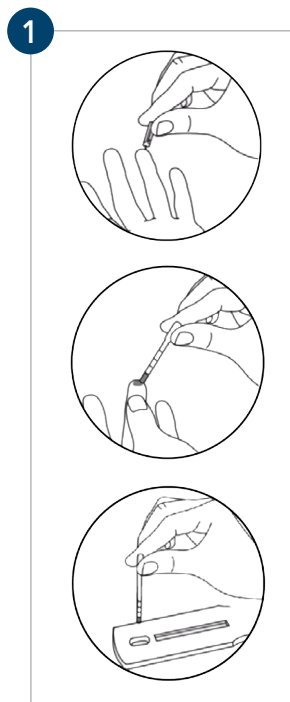
CPT CODE: 87818QW

National limit Amount: \$18.22

DISCLAIMER – The CPT information contained in this document is provided as representative examples of reimbursement in this category. It is intended to assist providers in accurately obtaining reimbursement for health care services. It is not intended to increase or maximize reimbursement by any payor. Providers should consult their payor organizations with regard to local reimbursement policies. The information provided in this document is for information purposes only and represents no statement, promise or guarantee by CLIAwaived™ Inc. All CPT codes are supplied for information purposes only and represent no statement, promise or guarantee by CLIAwaived™ Inc. that these codes will be appropriate or that reimbursement will be made. CPT codes and descriptions are copyrights of the American Medical Associations. CPT does not include fee schedules, relative values or related ratings. The source for this information is the Center for Medicare and Medicaid Services. The content provided by the Center for Medicare and Medicaid Services is updated frequently. It is the responsibility of the service provider to confirm the appropriate coding required by their local Medicare carriers, fiscal intermediaries and commercial payors. All product information and prices are subject to change without notice at any time. Please call our office before ordering to verify current prices.

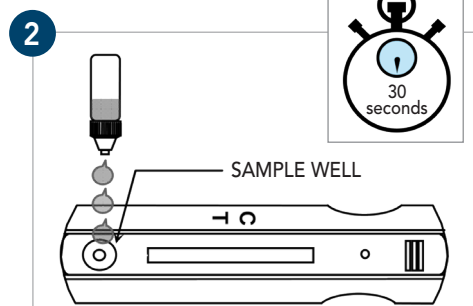
H. PYLORI TEST KIT

The **CLIAwaived,™ Inc. H. pylori Test Kit** is a qualitative immunoassay that detects antibodies specific to *Helicobacter pylori* in human whole blood.

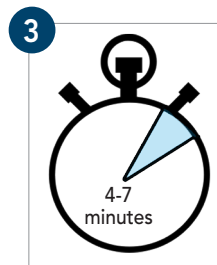


Dispense sample into test.

- Remove device from pouch and place on a flat surface.
- Clean patient's finger with an alcohol swab. Puncture fingertip with lancet. Wipe away first sign of blood. Gently rub hand from palm to finger to help form a drop of blood at the puncture site.
- Use provided dropper to pick up blood. Fill blood to the first line of the tip end.
- Dispense entire contents of dropper into sample well.

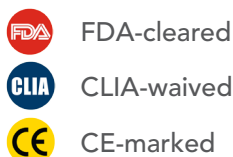


Dispense buffer into test. After allowing 30 seconds for sample to be absorbed, add 3 drops of buffer into sample well.



Read results. The results should be read within 4-7 minutes. **DO NOT** interpret results after 7 minutes.

Please refer to package inserts for detailed instructions and technical information.



CLIAwaived™ Inc.

For more info, please call: **888.882.7739**

Visit us online at: **www.cliawaived.com**