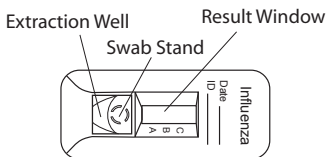


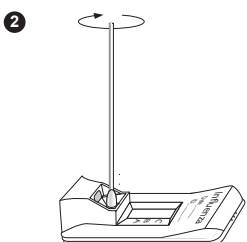
TEST DEVICE



PROCEDURE



Tear the tab off the Extraction Reagent Capsule and dispense entire contents into the Extraction Well.



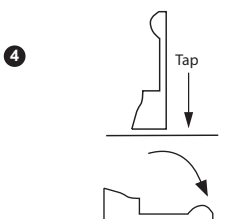
Insert the specimen swab in the Swab Stand.

- **Spin** swab 3 times to mix the specimen.
- **Let stand** 1 minute.
- **Spin** swab 3 times again.



Discard the swab.

Raise the device upright and **let stand** 1–2 seconds.



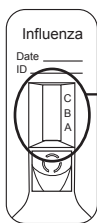
Gently **tap** device to ensure the liquid flows into the hole.

Then, lay the device back down.

Start timing.

- 5 Read test results at 10–15 minutes.
Confirm negative results at 15 minutes.

INTERPRETATION OF RESULTS



Any visible A and/or B Line(s) with C Line is positive.



A line:
Influenza type A



B line:
Influenza type B

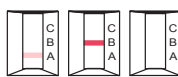


A & B lines:
Influenza type A & B

C Line only
Negative (-)



No C Line
Invalid



Repeat with new sample and device.

MF Manufactured for:

Meridian Bioscience, Inc.
3471 River Hills Drive
Cincinnati, Ohio 45244, USA
Tel.: 1-513-271-3700

To Place An Order: 1-800-543-1980
For Technical Support: 1-800-343-3858
www.meridianbioscience.com

EC REP

MT Promedt Consulting GmbH
Altenhofstrasse 80
66386 St. Ingbert
Germany
Tel.: +49-68 94-58 10 20



Manufactured by:
PBM

Princeton BioMeditech Corp.
4242 U.S. Hwy 1
Monmouth Junction, NJ 08852, USA
Tel.: 1-732-274-1000