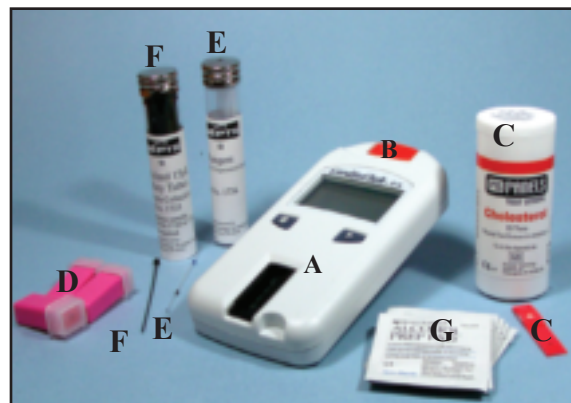
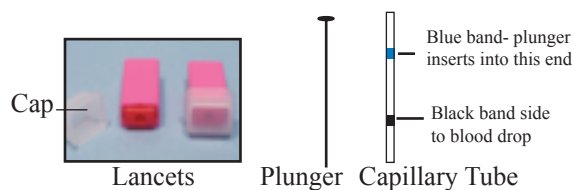


PREPARING TO TEST



Testing Supplies

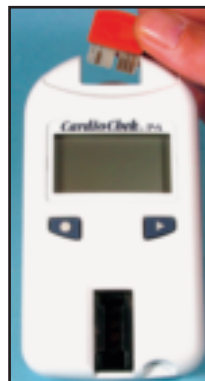
- CardioChek P•A Analyzer (A) with matching Cholesterol Panel MEMo Chip (B) (shown inserted)
- PTS PANELS™ Cholesterol Test Strips (C)
- Gloves *
- Sterile lancets (D)
- Capillary tubes (E)
- Plungers (F)
- Gauze *
- Alcohol wipes (G)
- Bandages *
- Biohazardous waste container *
- 2-AAA batteries *

* Not pictured

CARDIOCHEK™ P•A CHOLESTEROL TESTING GUIDE

1. Insert MEMo chip.

Insert the MEMo Chip that matches the lot number on the test strip vial. Press either button (◀ or ▶) to turn the CardioChek P•A ON.

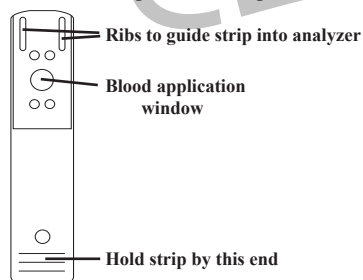


2. Insert test strip.

Hold the test strip by the end with the horizontal raised lines. Insert the opposite end of the strip firmly into analyzer. Push the strip in as far as it will go. The analyzer will then display APPLY SAMPLE.



Cholesterol Test Strip - this side up.



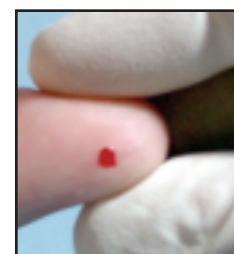
3. Stick finger.

Wipe the finger with an alcohol wipe and let finger dry. Remove the cap from a lancet. Press lancet against side of finger until the lancet clicks.



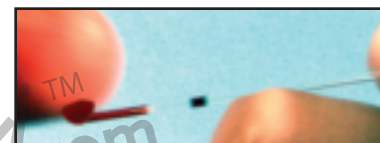
4. Get a blood drop.

Massage the hand from the palm to the finger. The blood drop forms on the finger. Wipe away the first drop of blood with gauze. Then collect the blood for testing.



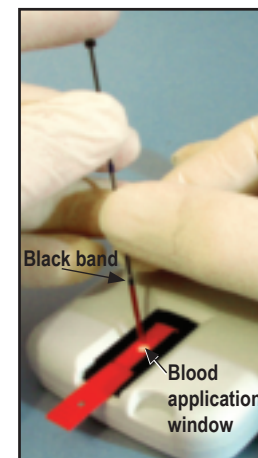
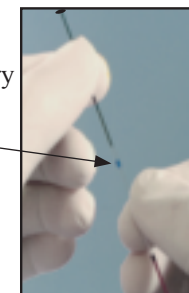
5. Collect blood drop.

Hold the blue-banded end of capillary tube and touch the blood drop to the black-banded end of the capillary tube. The capillary will fill with blood automatically until the blood reaches the black band. Make sure the capillary is filled to the black band and has no bubbles.



6. Insert plunger.

Insert black plunger into capillary end with blue band.



7. Dispense blood.

With APPLY SAMPLE displayed, hold capillary directly over the test strip white blood application window and push plunger down slowly and smoothly. Dispense all of the blood into the blood application window.

(Note: The analyzer shuts down if idle for 3 minutes.)

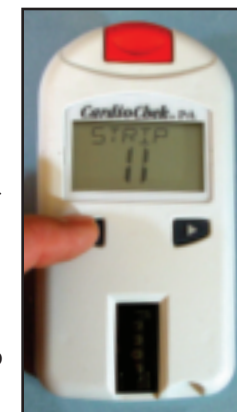
8. Wait / Read Results.

Within about a minute, the result will appear on the display. Remove and discard the test strip.



9. Prepare for next test.

If the CardioChek P•A analyzer is ON and the last result is still on the display, or the display says RUN TEST, press the Enter button (left ◀ button with a circle on it). The CardioChek P•A will display INSERT STRIP and you are ready to go back to Step 2 to perform another test.



For help, please see other side.

CLIAwaived, Inc.
 San Diego, CA 92130
 (888) 882-7739 (toll-free in the USA)
 (858) 481-5031
www.cliawaived.com

PROBLEM-SOLVING

Problem:

I am not getting a large enough drop of blood to fill the capillary tube.

What to do:

- Make sure hand and finger are warm.
- Increase blood flow by squeezing and massaging the hand and finger.
- If this doesn't work, re-stick. Massage the hand from palm to fingertip to get a "flush" at the end of finger, and then stick the finger where you see the flush.
- Use lancet with sufficient penetration depth (>2mm)
- If the blood runs down the finger, hold the finger with the puncture down so that the blood drop "hangs."

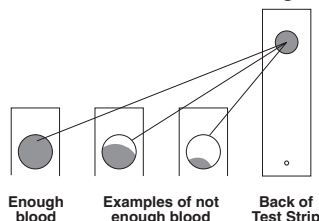
Problem:

The result is unexpectedly low.

The result reads "<100".

What to check:

- Did some blood miss the white application window on the strip? If so, you must repeat the test with a new test strip.
- Did the blood not fill to the black line on the capillary? If so, you must repeat the test with a new test strip.
- Did you accidentally move the plug in the capillary when you inserted the plunger? If so, you must repeat the test with a new test strip and new capillary.
- Remove the strip and look at the back of the reaction area. Is the area completely and evenly colored blue? If not, you must repeat the test with a new test strip.



- Was the strip inserted into the analyzer with the ribbed side up? If not, you must repeat the test with a new test strip.

Note: If there is ever a doubt about the result, you should repeat the test. If the second result is the same or close to the first, the result is confirmed (even though unexpected).

Problem:

The capillary did not fill with blood to the black line.

Problem:

The result is unexpectedly high.

The result reads ">400".

Problem:

The analyzer displays CHANGE BATTERY.

What to do:

- Make sure you are filling the end closest to the black line.
- Hold the capillary horizontally to fill easier.
- Massage hand and finger to get more blood. Touch capillary to blood drop again to obtain more blood. Repeat as needed.

What to check:

- Was there excess blood on the outside of the capillary glass that dispensed onto the strip? If so, there might have been too much blood applied to the white blood application window. You will need to repeat the test.
- Did you attempt to use two capillaries or apply the blood directly from the finger? If so, there might have been too much blood applied. You will need to repeat the test.
- Is the window of the analyzer dirty? If so, you must clean it with alcohol wipe and gauze pad, then repeat the test.

Note: If there is ever a doubt about the result, you should repeat the test. If the second result is the same or close to the first, the result is confirmed (even though unexpected).

What to do:

Slide open the battery door on the back of the analyzer. Replace both AAA batteries.

Problem:

The analyzer's display is blank.

Problem:

The display says INSTALL MEMO CHIP.

HELPFUL REMINDERS:

- Always make sure the test strip is inserted in the analyzer with the ribbed side facing up.
- Always make sure that the test strip is inserted as far as it will go into the analyzer.
- Make sure that you always add blood to the black-banded end of the capillary tube.
- Make sure that you always put the plunger into the blue-banded end of the capillary tube. The blue-banded side should never have any blood in it!
- Use the test strip only once.
- If blood gets on the analyzer glass, clean thoroughly with an alcohol wipe and dry with gauze before running any more tests.

For additional information, see the CardioChek P•A User Guide and the PTS PANELS Cholesterol Test Strips instructions.

For help, contact Customer Service
(888) 882-7739 (toll free in the USA)
(858) 481-5031

Fax: (801) 720-7568

E-mail: info@cliawaived.com

What to do:

If the analyzer was idle for more than 3 minutes, it may have automatically shut off. Press the Enter-button (↵) to turn ON. To retrieve results from memory: Turn on. Press NEXT (▶) to get RUN TEST. Press NEXT (▶) again to get MEMORY and press ENTER (↵) then CHEM will be displayed. Press ENTER (↵) again. Press NEXT (▶) and CHOL is displayed. Press ENTER (↵) to display last result.

What to do:

The MEMO chip may be loose or damaged or upside down. Make sure it is correctly inserted and push firmly into the analyzer. If that does not resolve the problem, replace the MEMO chip with another of the same lot code.